

Project Participants:



Supported by
The National Lottery[®]
through the Heritage Lottery Fund



Heritage
Lottery Fund

along the terrace a local area heritage guide to Adelaide Terrace, Benwell

along the terrace

memory map

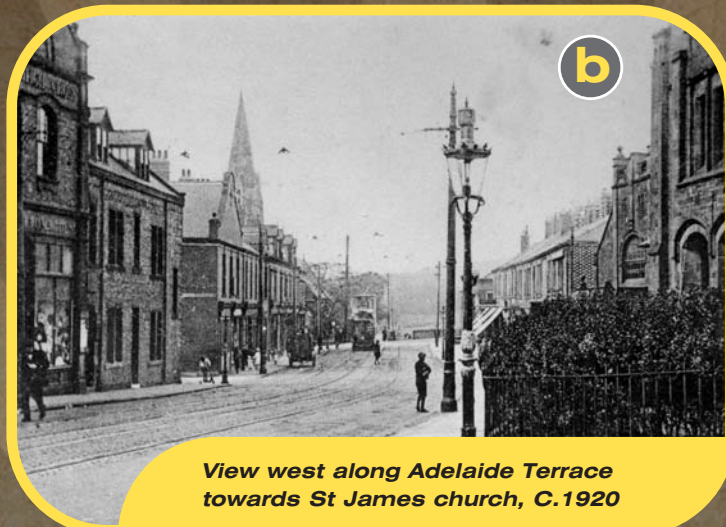
a local area heritage guide

along the terrace

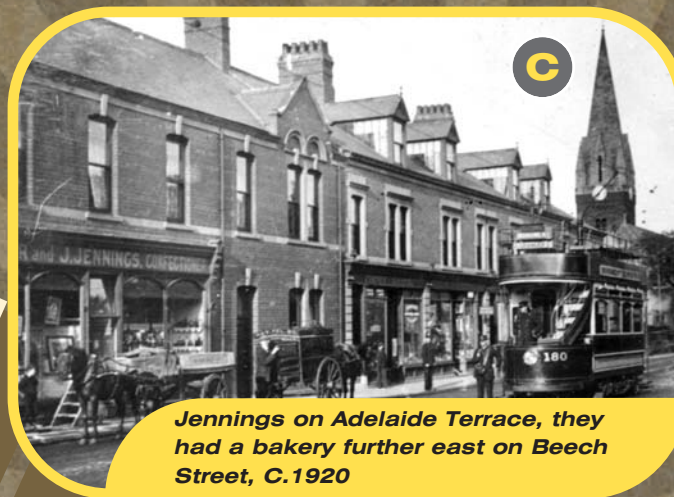
memory map



The Grand Cinema Palace, Condercum Road, 1929.



View west along Adelaide Terrace towards St James church, C.1920



Jennings on Adelaide Terrace, they had a bakery further east on Beech Street, C.1920



1. Tram lines (Belle Pattison)

Just a bit further along was the terminus for the tram cars. They used to come right along to Deleval Road and then the driver used to get out of the front with a long stick. He would pull the things off the wire, walk around the front of the tram and put them on the other way to go back. There was no traffic went any further then, than Deleval Road. From Deleval road, there wasn't any traffic at all in that direction.

2. Barrage balloon (Iris Blacker)

Just below the library on Atkinson Road there used to be a barrage balloon during the war. We were fascinated by it and if we were allowed to just go and stand and look at it we were happy. It was a pleasure going to the library because you passed it on the way there and then you passed it on the way home again

4. Billiard Hall (Iris Blacker)

Coming along the terrace from Benwell Village, before you got to the Co-op there was a billiard hall called The Benwell Billiard Saloon. If any of the boys at school went missing they would send a teacher along to the billiard hall and the boys were always there!

5. Gibson's Fruit Shop (Margaret Rutherford)

Gibson's was on Adelaide Terrace and it was a fruit and veg shop. It was a double fronted shop and there were two big windows to do out. I went there to work in 1947 and there was no 'cash-in' till then.

The shop used to be packed because in those days people used to shop from meal to meal. They didn't do a weeks worth of shopping like we do now because they didn't have the money so they used to get something for their dinner and then come out again to buy something for their tea. So it was a very busy shop and I used to trim the 'caulies' and I never used to put them on the shelf, I used to stand and sell them to the queue because I had the gift of the gab.

3. The Grand Cinema Palace (Harry Kemp)

I used to go the Grand Cinema Palace on Condercum Road which we just called 'The Cinema'. They used to change the film twice a week so you would go on a Monday, Tuesday or Wednesday and then again at the end of the week. There was one floor and it was mostly showings for children. They never went to the proper toilet and instead used the floor! You had to watch where you were sitting and try and keep your feet off the ground.

6. Campbell's Bakery (Harry Kemp)

I used to do the shopping for my mother at Campbell's Bakery which was on the corner of Bond Street. I had to queue up for bread whilst they baked it, sometimes for half an hour and going home I used to eat the corners of the loaf!

7. Wash House (Olive Wilson)

There was a wash house on Bond Street where I did my heavy washing once a week, things like bedding and curtains. You had to put your name down on a list if you wanted a space. There was a big dryer that looked like a wardrobe. You opened the door and pulled out a large rack which you hung the clothes on and then pushed back into the dryer. It dried all the sheets really quickly.

along the terrace

memory map

8. Storey's (Harry Kemp)
 There was a shop called Storey's which was on the corner of Clara Street. It sold everything, you could even take your batteries there to charge up for your wireless. You could buy paraffin, screws, anything for Do It Yourself. The smell was fantastic, like an old chemists and they had wooden drawers filled with candles.

9. Fruit and Vegetable Barrow (Belle Pattison)
 Now me dad had a barrow at the bottom of Clara Street, that was his stand, he had to pay. It was a fruit and vegetable barrow and I used to help out on there when I was little.

10. Stan Eadie's (Harry Kemp)
 There was a barbers just around the corner on Clara street called Stan Eadie and we used to get our hair cut there. He used to put a plank across the seat for when you were small and you would sit up on there so he could reach your hair.

11. Larch Street (Olive Wilson)
 I remember living in a two room flat on the corner of Larch Street and Adelaide Terrace above a Hewson & Sons, a butcher's shop. We had to open the back door and go down all the steps to get the water from the back yard and to use the toilet. The coal house was out the back too. The bedroom was big enough for a bed and a wardrobe and there was a bed settee in the living room for my three children.

I used to do all my shopping on the terrace. There was an ice cream shop, a fruit shop and a wool shop amongst others and I didn't need to go shopping anywhere else.

12. Beech Street (Belle Pattison)
 Across the road from Beech Street was another big drapers shop called Chestertons, they sold curtains and that sort of thing. We lived on the corner of Beech Street. At the top of the street, on the right hand side was Jennings Bakery which took practically the whole row. Later on they built a bank at the bottom of the same street, but I'm talking about when I was older now...

13. The Adelaide Cinema (Harry Kemp)
 The Adelaide Cinema closed before the war but as kids we found a way in and we used to play in there. There were about four or five of us who used to sneak in and play around, running up and down the stairs and onto the stage. It was always dark but we managed to find our way around. We weren't supposed to be in there of course but we thoroughly enjoyed ourselves.

14. Mitchell's Bakery (Henry Lenthall)
 I worked there ten years, it was the pie shop before the war and afterwards the boss's daughter married a cockney and he had big plans for the place. He also knew the chef at the Old Assembly Rooms so we started supplying them and then they took over the shop next door and made it a shop for the bakery. We had three girls working in the shop and on a Saturday morning they used to queue all the way out of the door.



Adelaide Terrace at the junction with Beech Street, C.1910



Looking west along the Terrace from Woolworths which was originally the Adelaide Cinema, C.1969

If you were to walk along Adelaide Terrace in Benwell today, the shops, businesses and buildings you would see bear little resemblance to the street from the first half of the 1900's. The 'Terrace' was a busy shopping street remembered by many who lived and worked there.

In 2006/7, in partnership with Age Concern as part of the Memory Map Project; the Newcastle Community Heritage Project collected memories from local people about daily life on Adelaide Terrace to create a lasting reminder of the changes in the West End.

Henry Lenthall
Harry Kemp
Margaret Rutherford
Belle Pattison
Margaret Jackson
Iris Blacker
Olive Wilson
Joyce Fitzpatrick
Arthur Roberts

The Newcastle Community Heritage Project began in June 2005. It creates opportunities for community groups to celebrate their local history. By focussing on history within living memory, the project allows Newcastle residents to become experts in their own heritage.

If anyone would like to share their memories of life in Newcastle since the 1930's or participate in any of our projects, please contact:

Hannah Laughton,
Education Outreach Officer (West), Fenham Library,
Fenham Hall Drive, Newcastle Upon Tyne, NE4 9XD
Tel: (0191) 277 4274
Email: hannah.laughton@newcastle.gov.uk